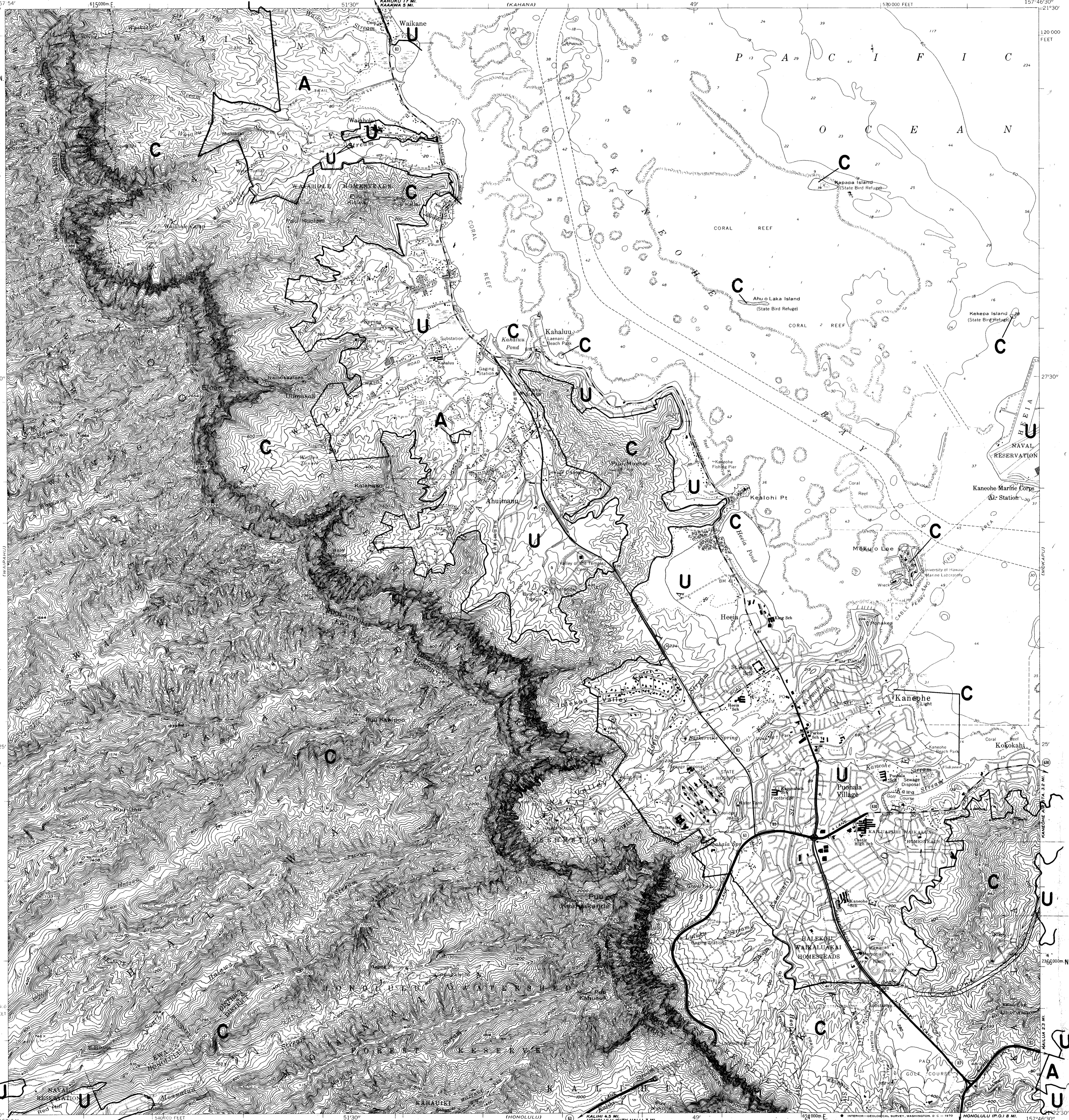


UNITED STATES
DEPARTMENT OF THE INTERIOR
GEOLOGICAL SURVEY

not current

LAND USE DISTRICT BOUNDARIES		
DISTRICT MAP	STATE OF HAWAII LAND USE COMMISSION DEPT. OF PLANNING & ECONOMIC DEVELOPMENT EFFECTIVE DATE, DEC 20 1974	DISTRICTS U = URBAN R = RURAL A = AGRICULTURAL C = CONSERVATION

KANEHOE QUADRANGLE
HAWAII—HONOLULU CO.
ISLAND OF OAHU
7.5 MINUTE SERIES (TOPOGRAPHIC)



Mapped, edited, and published by the Geological Survey
Control by USGS, JSC&GS, and Hawaii State Survey
Topography by photogrammetric methods from aerial photographs
taken 1954 and planetable surveys 1928-1930. Revised from aerial
photographs taken 1968. Field checked 1968
Selected hydrographic data compiled from USC&GS Chart 4134 (1964)
This information is not intended for navigational purposes
Polyconic projection. Old Hawaiian datum
10,000-foot grid based on Hawaiian datum
1,000-meter Universal Transverse Mercator grid ticks,
zone 4, shown in blue
Red tint indicates areas in which only landmark buildings are shown

APPROXIMATE MEAN
DECLINATION, 1968

SCALE 1:24,000
1 000 0 1000 2000 3000 4000 5000 6000 7000 FEET
1 0 1 2 3 4 5 6 7 8 9 10 KILOMETER
CONTOUR INTERVAL 40 FEET
DOTTED LINES REPRESENT 20-FOOT CONTOURS
DASHED LINES REPRESENT 10-FOOT CONTOURS
DASHED LINES REPRESENT 5-FOOT CONTOURS
DASHED LINES REPRESENT 2-FOOT CONTOURS
DASHED LINES REPRESENT 1-FOOT CONTOURS
DEPTH CURVES AND SOUNDINGS IN FEET—DATUM IS MEAN SEA LEVEL
SHORELINE SHOWN REPRESENTS THE APPROXIMATE LINE OF MEAN HIGH WATER
THE MEAN RANGE OF TIDE IS APPROXIMATELY 1 FOOT
THIS MAP COMPLIES WITH NATIONAL MAP ACCURACY STANDARDS
FOR SALE BY U. S. GEOLOGICAL SURVEY, DENVER, COLORADO 80225, OR WASHINGTON, D. C. 20242
A FOLDER DESCRIBING TOPOGRAPHIC MAPS AND SYMBOLS IS AVAILABLE ON REQUEST

BOUNDARY AMENDMENTS	
DOCKET NO.	DATE
A83-548 DPED OAHU	C to U DEC. 8, 1983
A83-550 DPED OAHU	C to U AUG. 29, 1985
A85-591 DPED OAHU	U to A, C to A JAN. 20, 1986
A91-667 SHIP ENTERPRISE	A to C JAN. 27, 1992

ROAD CLASSIFICATION
Heavy duty ——— Light duty ———
Medium duty ——— Unimproved dirt - - - - -
State Route ○
Map of the Island of Oahu, scale 1:62,500, 1954, is available
KANEHOE, HAWAII
N2122.5 - W15746.5/7.5
1968

0-12