

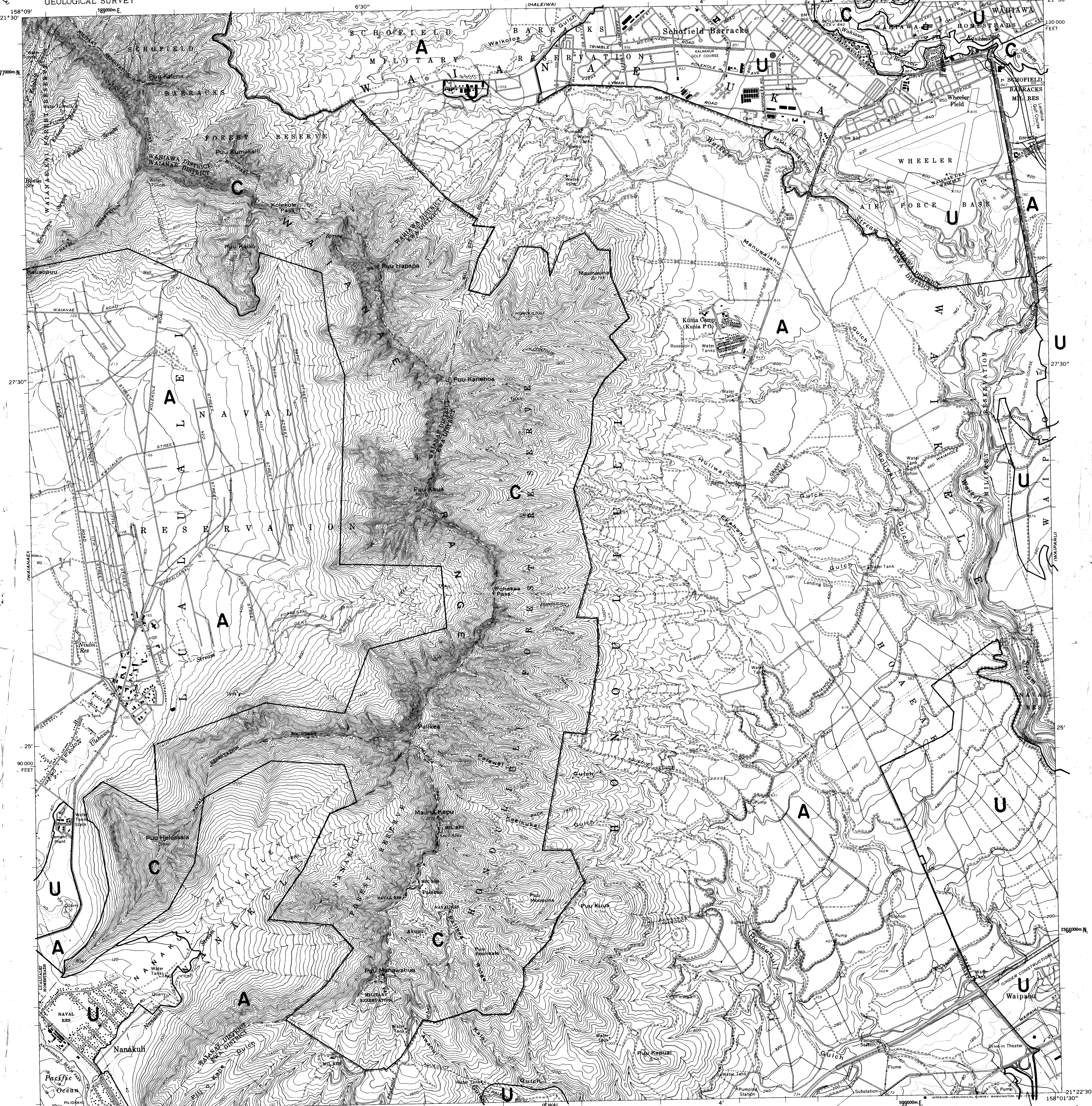
UNITED STATES
DEPARTMENT OF THE INTERIOR
GEOLOGICAL SURVEY

LAND USE DISTRICT BOUNDARIES

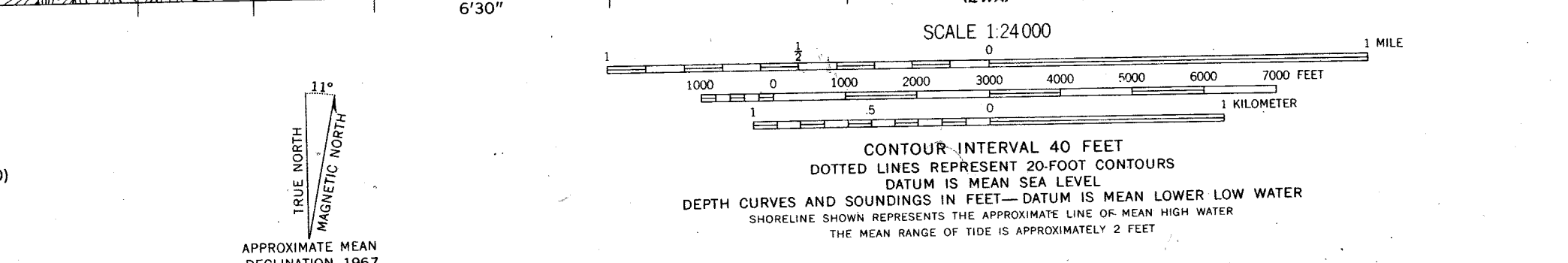
DISTRICT MAP 0-5	STATE OF HAWAII LAND USE COMMISSION DEPT. OF PLANNING & ECONOMIC DEVELOPMENT EFFECTIVE DATE: DEC 20 1974	DISTRICTS U = URBAN R = RURAL A = AGRICULTURAL C = CONSERVATION
----------------------------	--------------------------------------------------------------------------------------------------------------------------	-----------------------------------------------------------------------------

SCHOFIELD BARRACKS QUADRANGLE
HAWAII—CITY AND COUNTY OF HONOLULU
ISLAND OF OAHU
7.5 MINUTE SERIES (TOPOGRAPHIC)

not current



Mapped, edited, and published by the Geological Survey
Control by USGS, USC&GS, USCE, and Hawaii State Survey
Topography by photogrammetric methods from aerial photographs
taken 1952 and plane-table surveys 1927-1930
Field checked 1953. Revised 1967
Selected hydrographic data compiled from USC&GS Chart 4110 (1960)
and hydrographic surveys (1924)
This information is not intended for navigational purposes
Polyconic projection. Old Hawaiian datum
10,000-foot grid based on Hawaii coordinate system, zone 3
1000-meter Universal Transverse Mercator grid ticks, zone 4,
shown in blue
Red tint indicates areas in which only landmark buildings are shown



THIS MAP COMPLIES WITH NATIONAL MAP ACCURACY STANDARDS
FOR SALE BY U.S. GEOLOGICAL SURVEY, DENVER, COLORADO 80225, OR WASHINGTON, D.C. 20242
A FOLDER DESCRIBING TOPOGRAPHIC MAPS AND SYMBOLS IS AVAILABLE ON REQUEST

BOUNDARY AMENDMENTS	
DOCKET NO.	DATE
A75-403 A to U	APR. 14, 1976
A86-600 A to U	OCT. 24, 1986
A87-616 A to U	MAY 2, 1988 D.G.P.
A89-640 A to U	JAN. 09, 1990 Halekua
A92-675 A to U	JUL. 2, 1992 ST. FRANCIS MEDICAL CTR
A92-683 HALEKUA DEV. CORP.	A to U 12/09/93, Rec. 06/28/94
94/SLU-1 WILLIAM E. WANKET, JR.	A to U 4/21/94, Rec. 10/11/94

ROAD CLASSIFICATION
Heavy-duty
Light-duty
Medium-duty
Unimproved dirt
State Route

Map of the island of Oahu, Scale 1:62 500, is available
SCHOFIELD BARRACKS, HAWAII
N2122.5—W15801.5/7.5

1967

0-5