



Hawaii economic recovery

*Prepared for a meeting of the
Hawaii Council on Revenues
May 27, 2009*

*by Paul H. Brewbaker, Ph.D.
Principal, TZ Economics*

© 2009 Europa Technologies
Data SIO, NOAA, U.S. Navy, NGA, GEBCO
© 2009 Tele Atlas
US Dept of State Geographer

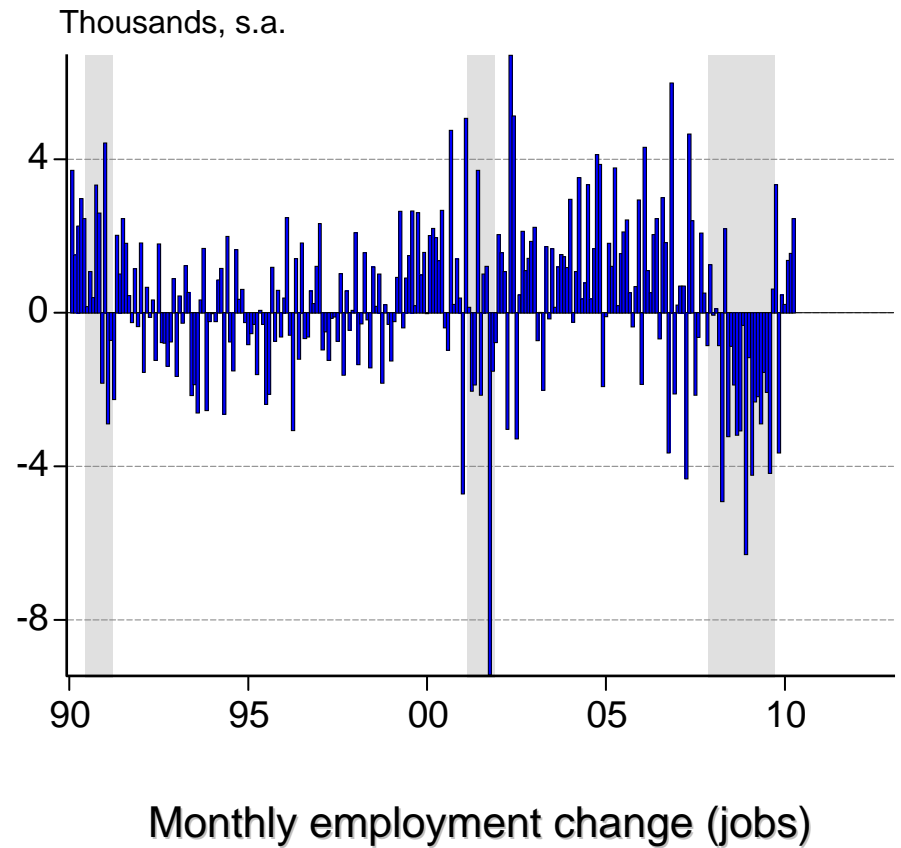
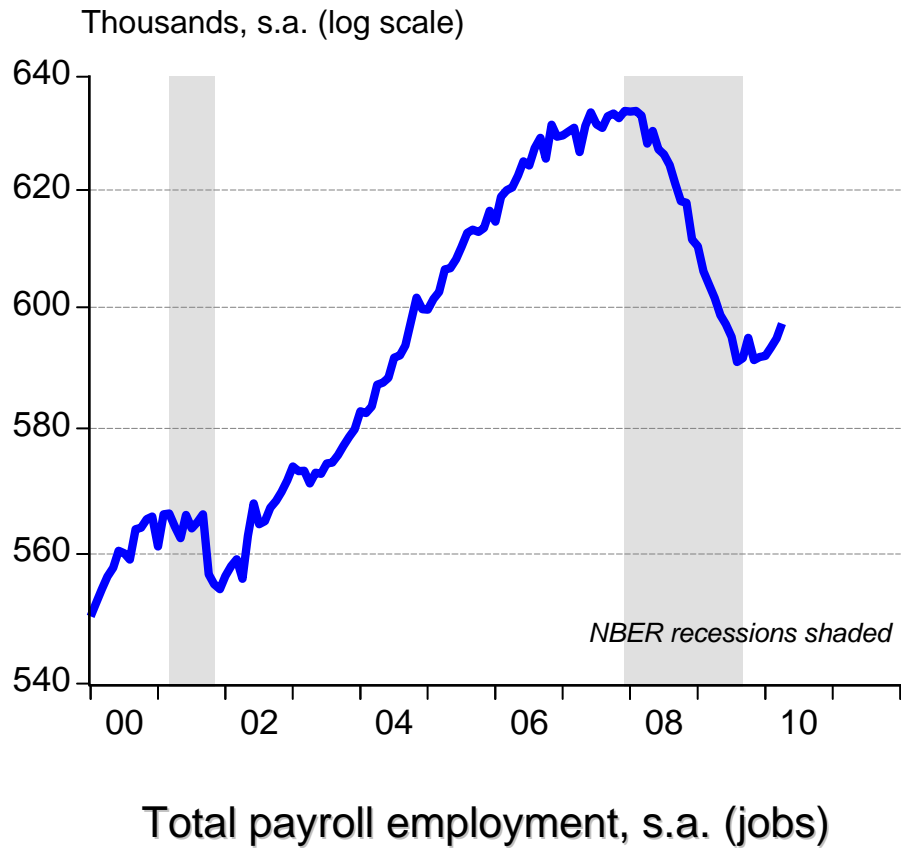
41°14'36.84" N 132°20'34.32" W elev -12928 ft

©2009 Google

Eye alt 4352.41 mi

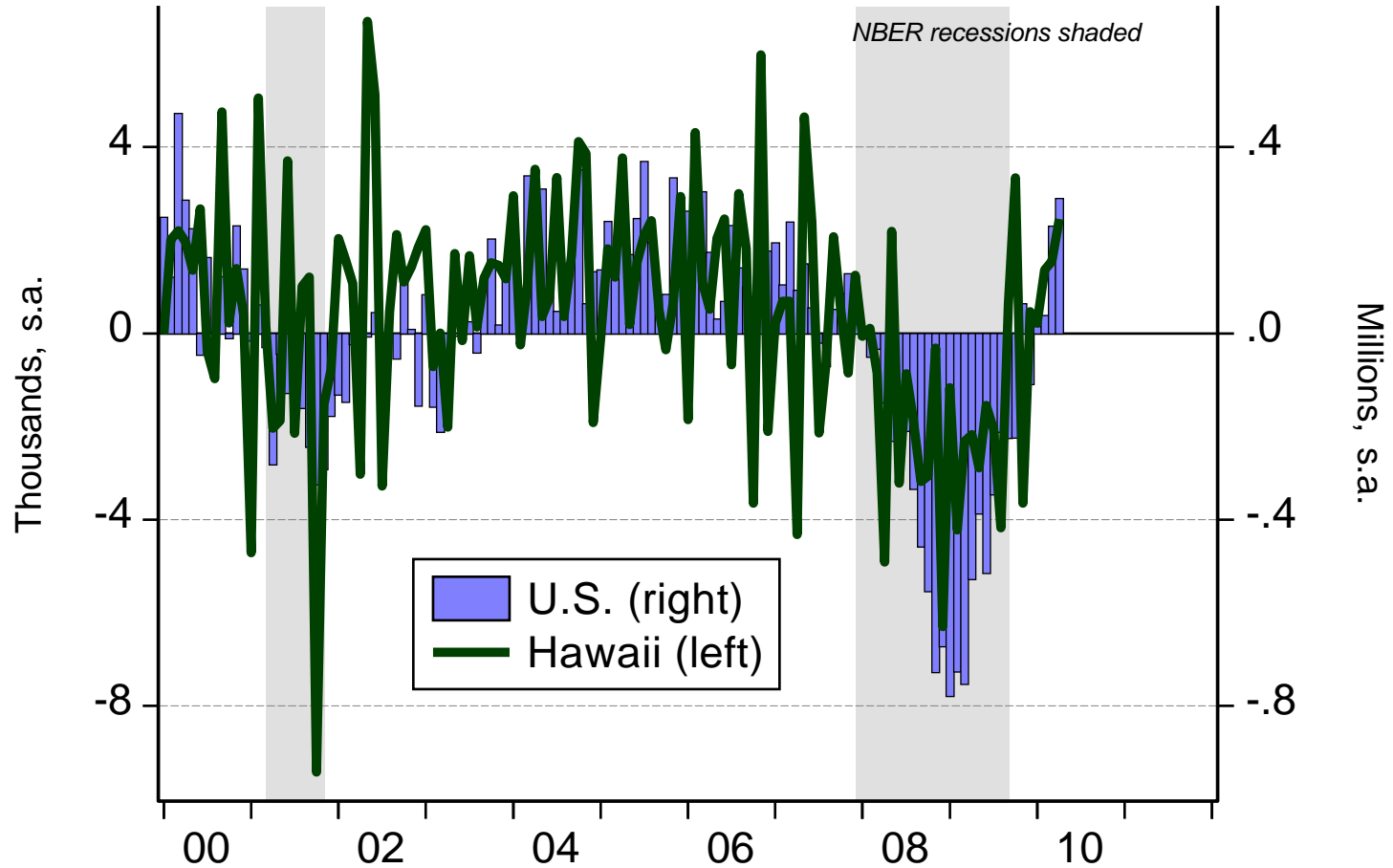


Hawaii payroll employment and change





Hawaii payroll employment and change

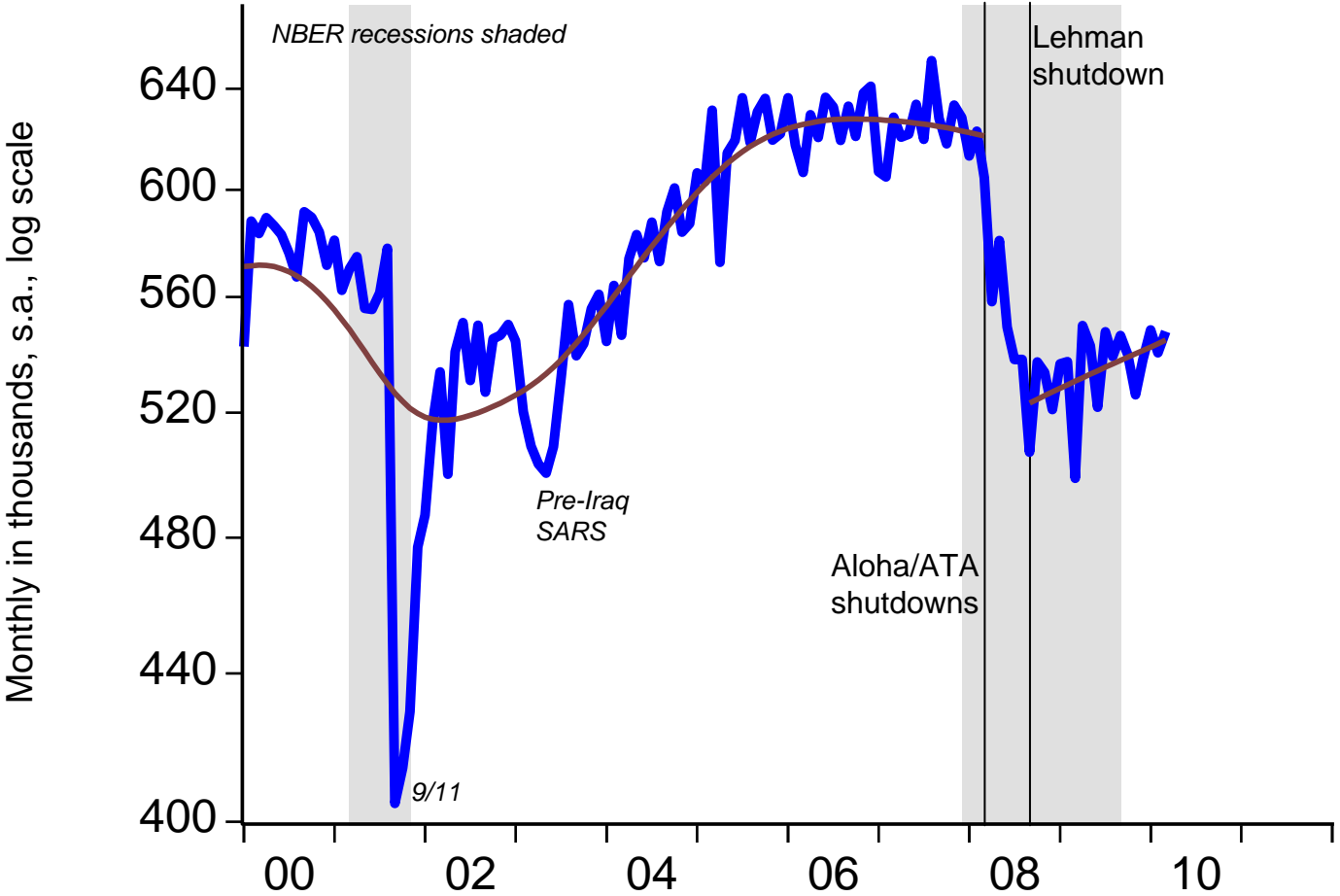


Slide copyright TZ Economics

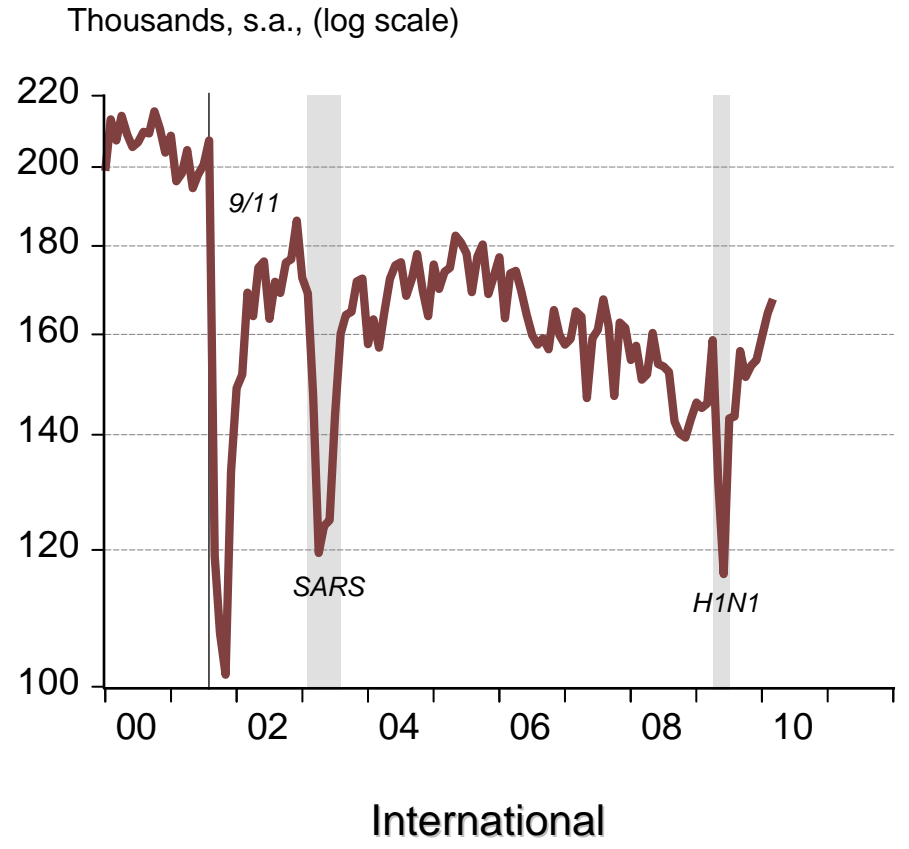
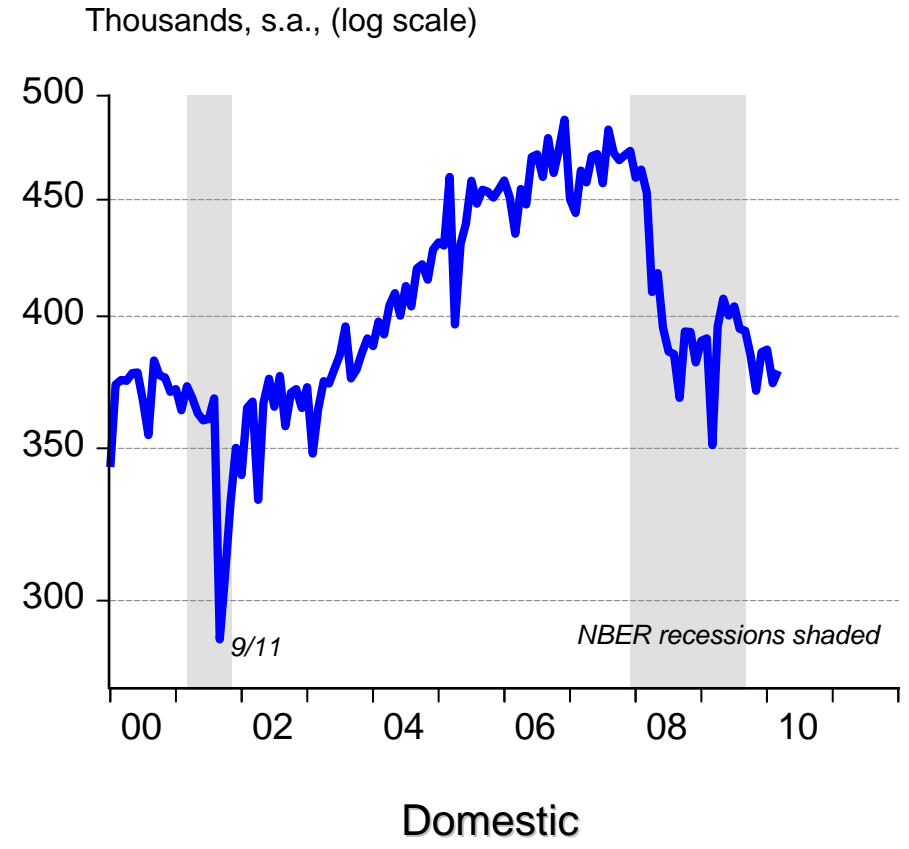
Source: U.S. BLS (via FRB St. Louis), Hawaii DLIR, DBEDT; seasonal adjustment of Hawaii data by TZE



Hawaii total visitor arrivals

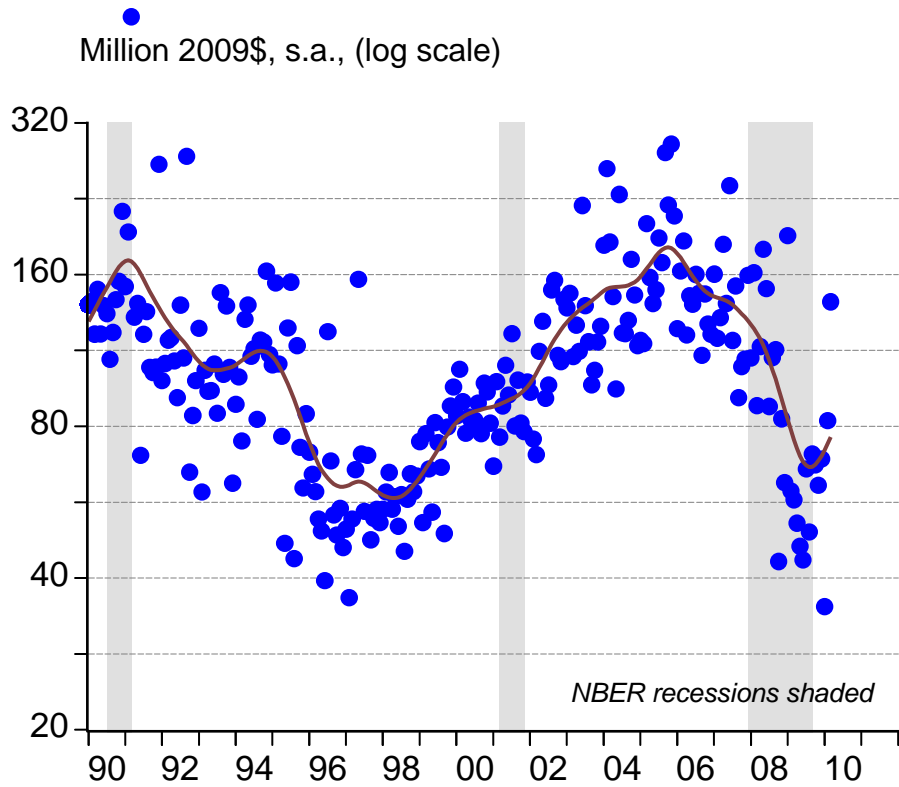


Hawaii visitor arrivals by origin

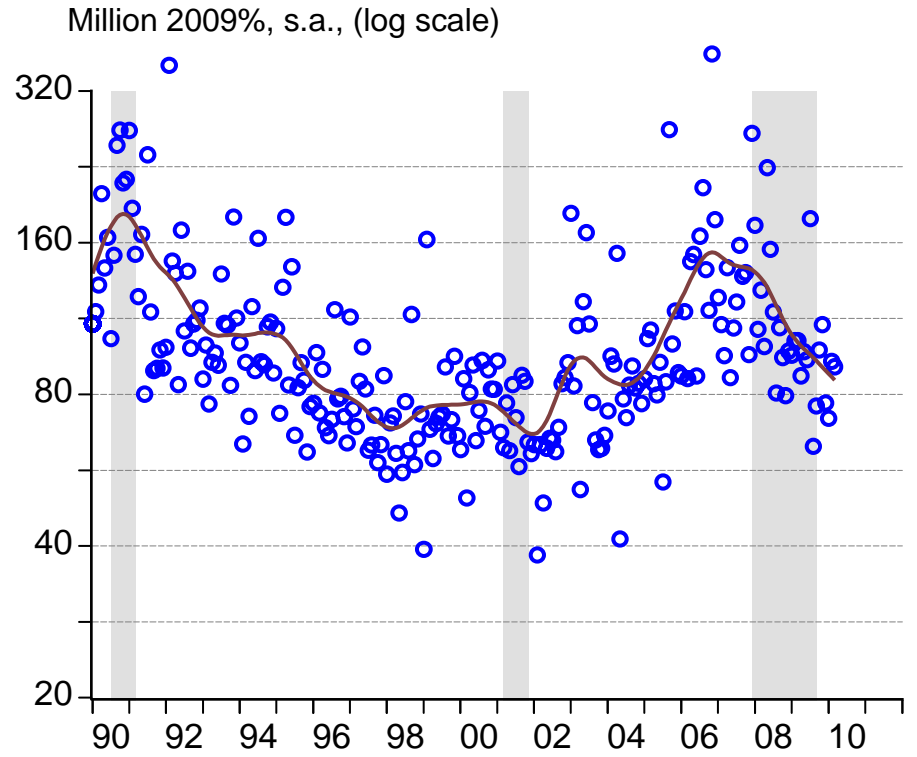




Hawaii real private building permit values

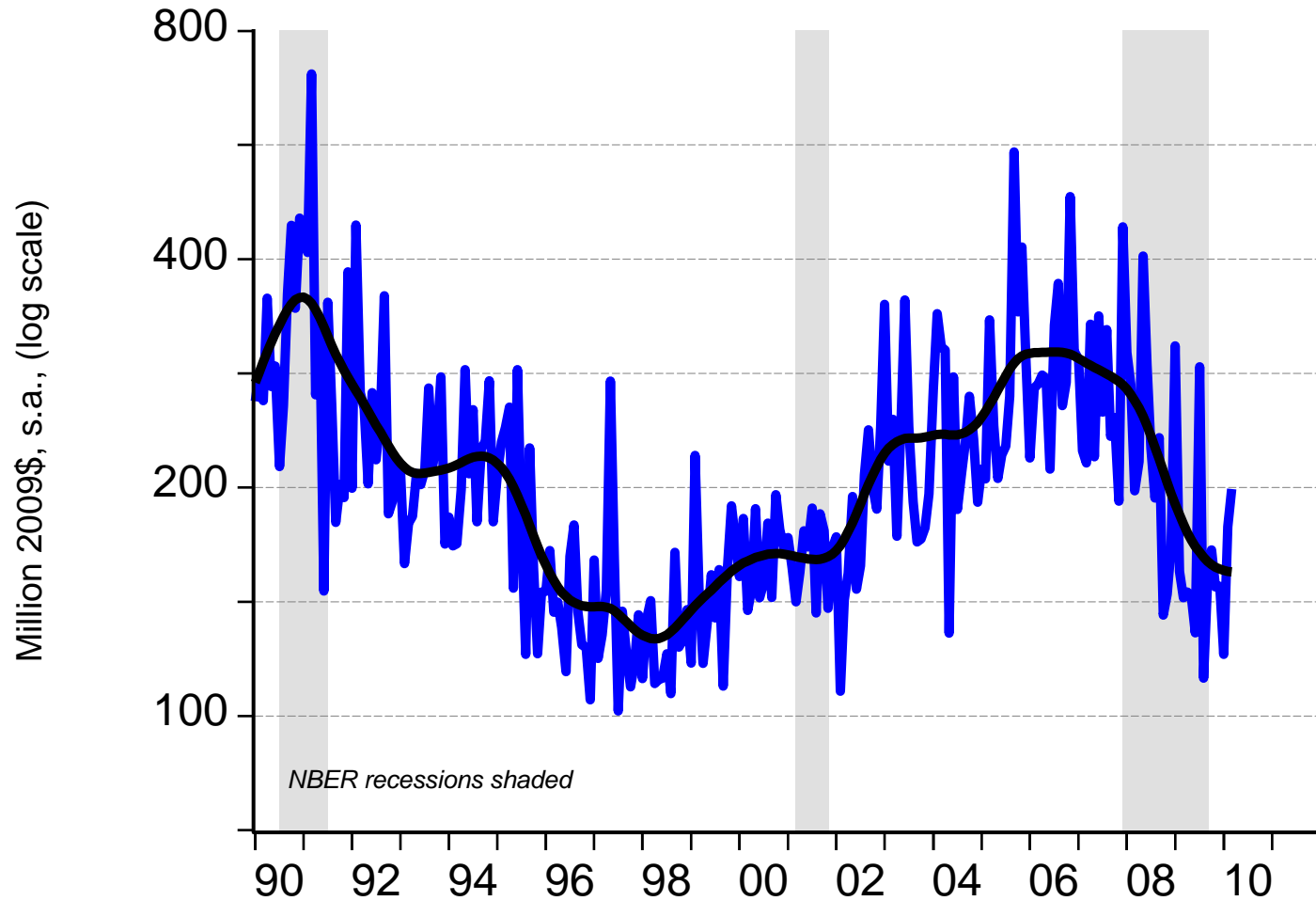


New residential



Nonresidential incl. additions/alterations

Hawaii real private building permit values

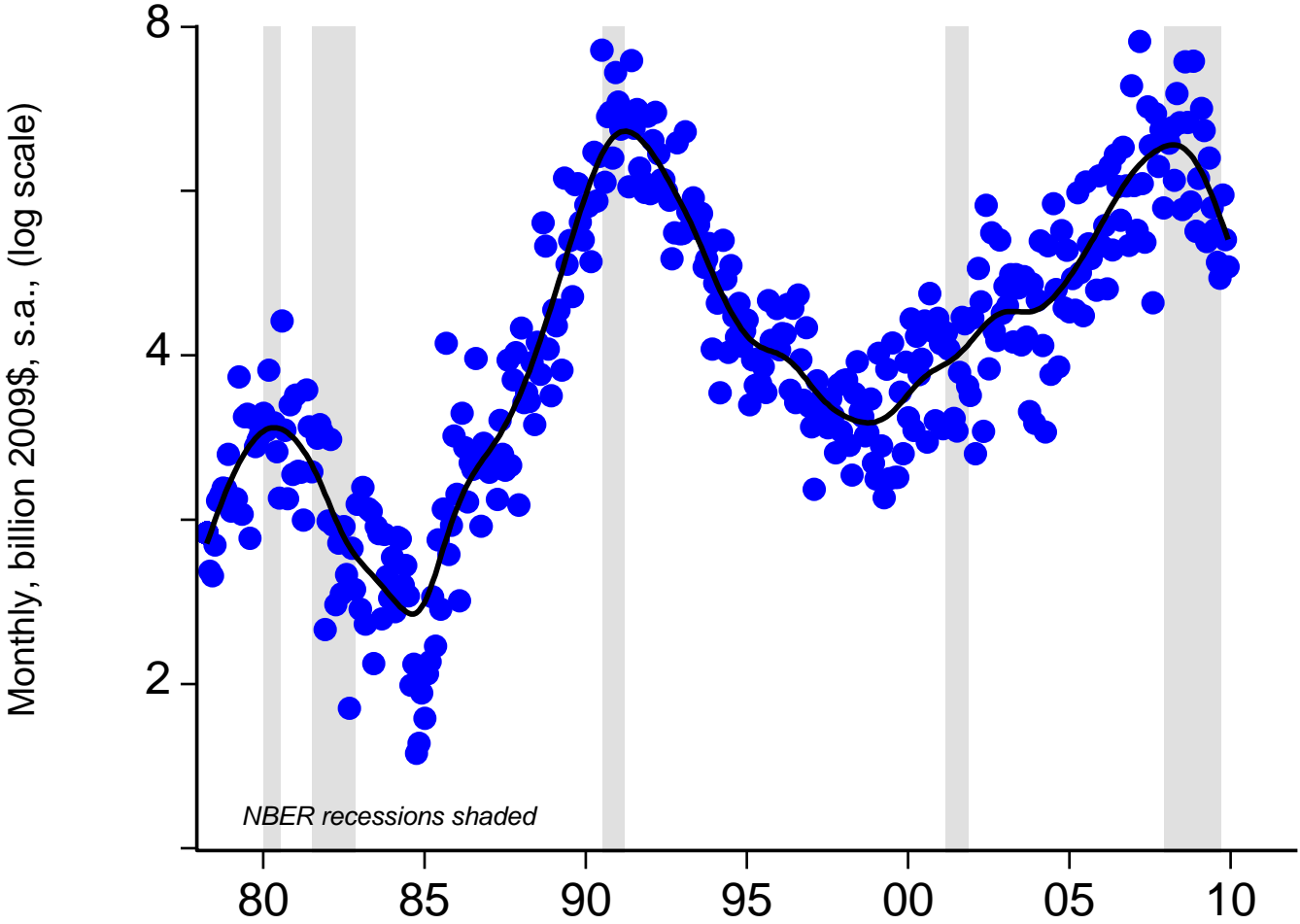


Slide copyright TZ Economics

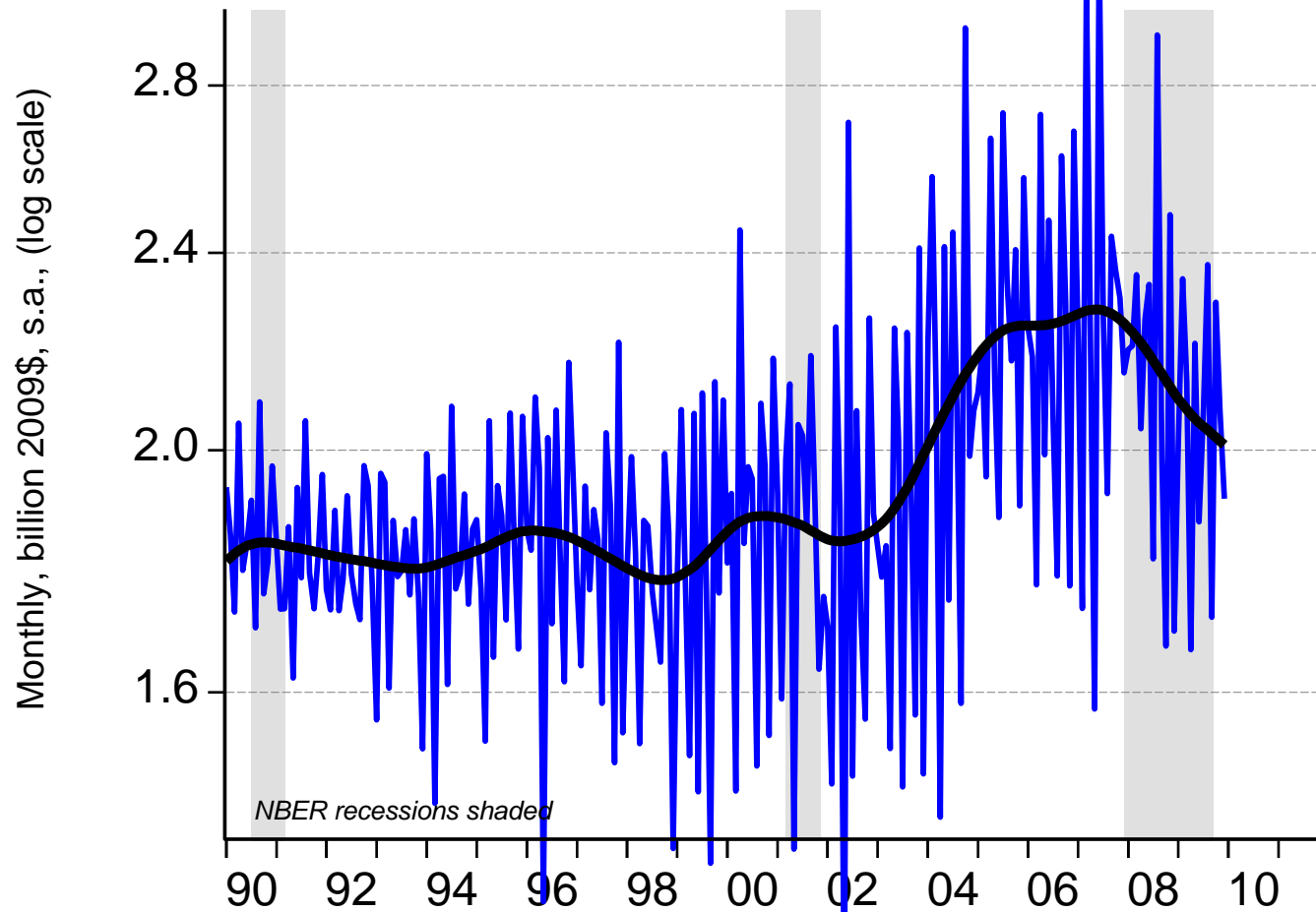
Source: Hawaii DBEDT, U.S. Bureau of the Census; deflation using Census cost index, seasonal adjustment by TZE



Hawaii real contracting (through 2009)



Hawaii real retail sales (through 2009)



Slide copyright TZ Economics

Source: Hawaii DoTax, U.S. BLS; deflation using U.S. CPI-U, seasonal adjustment by TZE



Pau